

Image may differ from product. See technical specification for details.

SY 503 M

Pillow block housing for insert bearings, cast iron, ISO standards

Pillow (plummer) block housings are designed to accommodate an insert bearing. The cast iron housings are strong, stiff and cost-effective. They are suitable for most applications and can be bolted directly to a support surface.

- Accommodate heavy loads in different directions
- High degree of stiffness
- Narrow design

Overview

Dimensions

Spherical seating diameter	40 mm
Centre height (pillow block)	30.2 mm
Housing overall width	32 mm
Centre distance between bolt holes	97 mm

Logistics

Product net weight	0.36 kg
eClass code	23-05-08-02
UNSPSC code	31171536

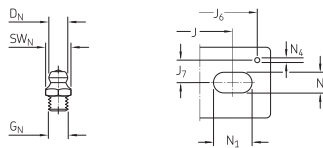
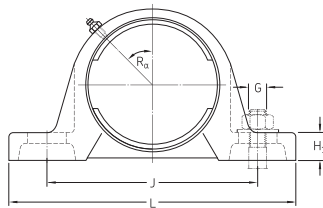
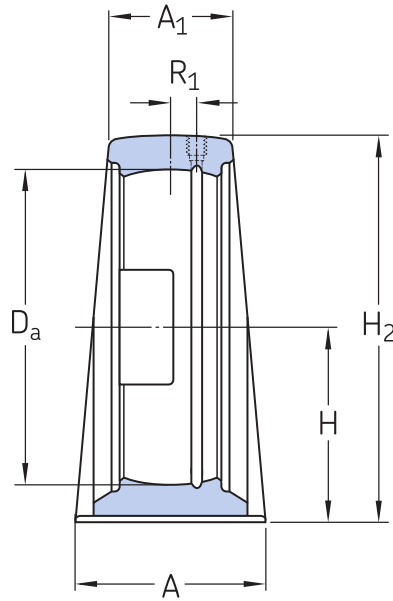
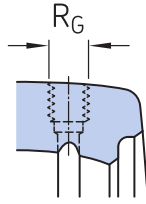
Properties

Housing type	Pillow block
Number of bolt holes for fasteners	2
Fastening bolt hole type	Plain
Material, housing	Cast iron
Coating	Without
Relubrication hole	With
Grease fitting	With

Technical specification

Material

Cast iron



Dimensions

D_a	40 mm	Diameter of spherical seat
A	32 mm	Base width
A_1	18 mm	Top width
H	30.2 mm	Height of spherical seat centre
H_1	14 mm	Foot height
H_2	57 mm	Overall height
J	97 mm	Distance between attachment bolts
J	max. 106 mm	Distance between attachment bolts
J	min. 88 mm	Distance between attachment bolts
L	127 mm	Overall length
N	11.5 mm	Width of attachment bolt hole
N_1	20.5 mm	Length of attachment bolt hole

THREADED HOLE

R_G	1/4-28 UNF	Housing thread for the grease fitting
R_1	1 mm	Axial position of the housing thread
R_a	45 °	Angular position of the housing thread

GREASE FITTING

D_N	6.5 mm	Diameter of head sphere of grease fitting
SW_N	7 mm	Hexagonal key size for the grease fitting
G_N	1/4-28 SAE-LT	Thread of the grease fitting

DOWEL PINS

J ₆	118 mm	Distance between dowel pins
J ₇	11.5 mm	Axial offset of dowel pins
N ₄	2 mm	Recommended diameter for dowel pins

Mass

Mass housing	0.37 kg
--------------	---------

Mounting information

Recommended diameter for attachment bolts, mm	G	10 mm
Recommended diameter for attachment bolts, inch	G	0.375 in